

What's New with *Nikon Scan* Version 1.6 and *Nikon Control* Version 2.2

The CD included in this package contains updated versions of *Nikon Control Windows* and *Nikon Scan Windows*. Most of the changes made to these programs since the release of the previous versions (*Nikon Scan Windows* 1.4 and *Nikon Control Windows* 2.1) have been in the form of improvements to drivers and have not had significant effect on the look of the program as described in the manuals, which remain unchanged from the previous release. The program which installs the software to the computer's hard disk has however been entirely revised. These changes are described in the present booklet, which replaces pages 3–10 of the *Nikon Control Windows User's Manual*.

System Requirements

To run *Nikon Control Windows* 2.2 or *Nikon Scan* 1.6, you will need an IBM PC/AT or compatible computer with a i386 microprocessor or better, running Windows® 95 or Windows NT® Version 4.0 or later. **The current versions of Nikon Scan and Nikon Control cannot be used under Windows 3.1 or Windows for Workgroups 3.11.** Operation cannot be guaranteed under versions of Windows NT earlier than 4.0. This information supersedes that given in the manuals, which were written for Windows 3.1. The operating procedures for *Nikon Control* and the *Nikon Scan* TWAIN driver however remain unchanged from those given in the manuals.

In addition to the other system requirements given on page 2 of the *Nikon Control Windows User's Manual*, a CD-ROM drive will be needed to run the installer program.

Software Installation

Before proceeding with installation, check to be sure that there is enough free space on the computer's hard disk to install *Nikon Control* and the drivers needed by *Nikon Scan* (a minimum of one megabyte of hard-disk space is required). If there are any Nikon scanners connected in the SCSI

chain at this point, be sure they have been turned off before the computer is powered on.

Step 1 — Insert the installation disk into the CD-ROM drive

After turning the computer on and starting Windows, insert the installation CD into the CD-ROM drive. The following window will appear on the desktop.



Note: In addition to *Nikon Control* and *Nikon Scan*, the installer CD includes a trial version of *Slides & Sound Plus*. Refer to the *README* file for more information.

Step 2 — View the README file

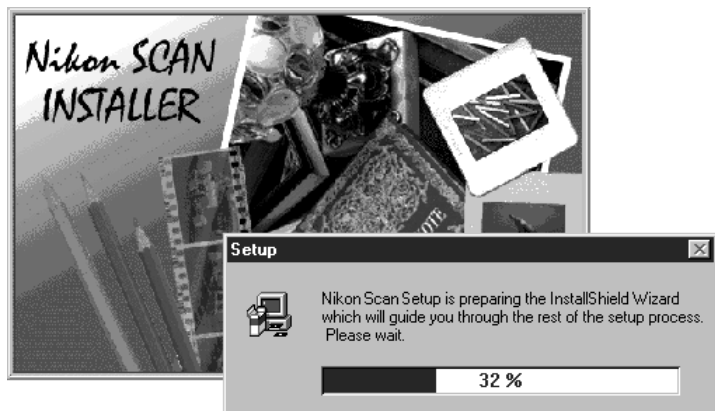
It is recommended that you take a few moments to view the README file, which contains important information about *Nikon Scan* and the other software included on the installation disk. Click **Read Me** to open the README file in the *Notepad* accessory, where the contents of the file can be viewed or printed. When you have finished, click the close box at the top right corner of the window to close the *Notepad* and return to the Welcome window.

Step 3 — Install *Nikon Control* and *Nikon Scan*

To install *Nikon Control* together with the *Nikon Scan* TWAIN drivers, click the **Install Nikon Scan** button. The Welcome window will be replaced by a window offering a choice of language for *Nikon Control*'s menus and dialogs and for *Nikon Scan*'s main scan window.



Select a language by clicking the appropriate button (please note that the menus and dialogs shown in the manuals are for the English version) or click **< BACK** to return to the Welcome window. Selecting a language will start the setup program that will install *Nikon Scan* and *Nikon Control* in the chosen language. The following progress indicator will be displayed while the setup program loads.



Once the initialization process is complete, the setup program's Welcome window will appear.



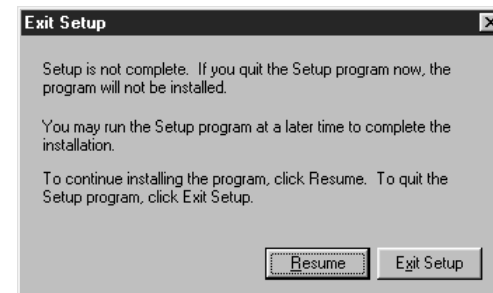
The buttons available in the Welcome window are explained below.

Next

Clicking **Next** brings up the license agreement (see Step 4). You must accept the terms of the license agreement before you will be able to proceed with installation.

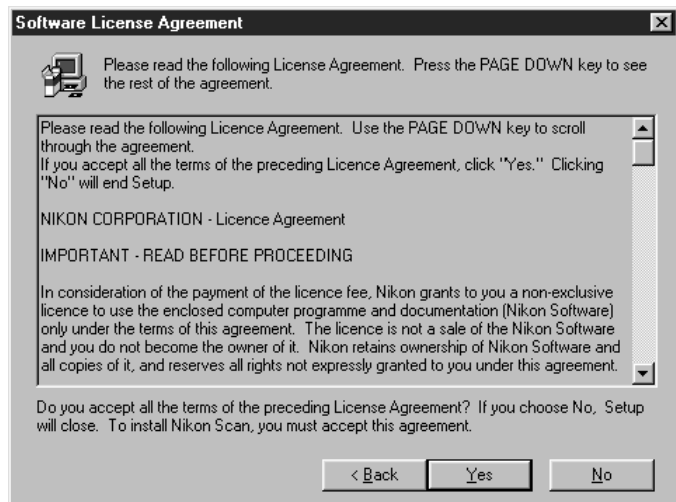
Cancel

Selecting **Cancel** brings up the dialog box shown below. Choose **Exit Setup** to quit without installing *Nikon Scan*, or **Resume** to continue installation. Should you choose to exit the installation program, you will still be able to complete installation at any time by repeating the process from Step 1.



Step 4 — View the License Agreement

Clicking **Next** in the Welcome window brings up the Software License Agreement shown below (note that the terms of agreement may differ depending on the country of sale).



Click **Yes** to accept the terms of the agreement and proceed with installation. Clicking **No** will bring up the Exit Setup dialog shown in the previous step, allowing you to exit the setup program without installing *Nikon Scan* and *Nikon Control*. Clicking **< Back** will take you back to the setup program's Welcome window.

Step 5 — Select a destination directory

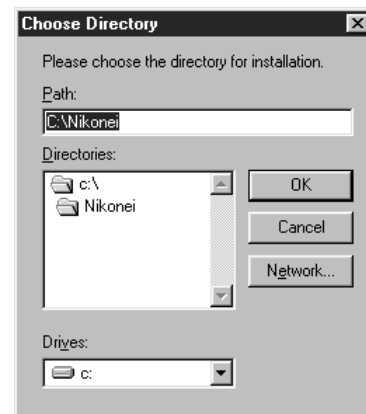
Clicking **Yes** in the Software License Agreement window brings up the Choose Destination Location dialog box.



The items in this dialog box are explained below.

Browse

Clicking **Browse** brings up the dialog box shown at right. You can type a destination directory for *Nikon Control* in the **Path** text box, or click on the folders shown under **Directories** to navigate to an existing directory on the current drive. Clicking on the arrow next to **Drives** allows you to select an alternative drive from a pop-up menu. Click **OK** when you have chosen a destination directory, or **Cancel** to accept the default directory displayed in the Choose Destination Location dialog box.



Next

Installs *Nikon Control* to the selected directory. If the specified directory does not already exist, it will be created automatically.

Back

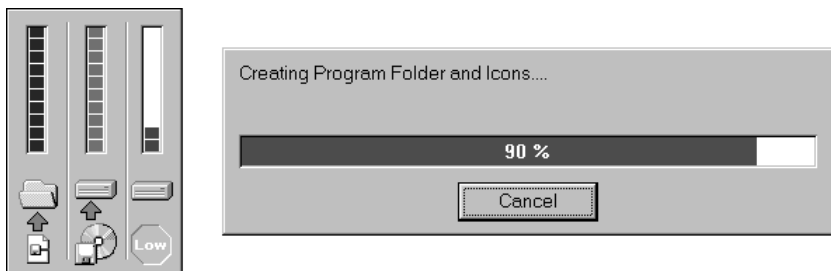
Returns you to the Software License Agreement dialog shown in Step 4.

Cancel

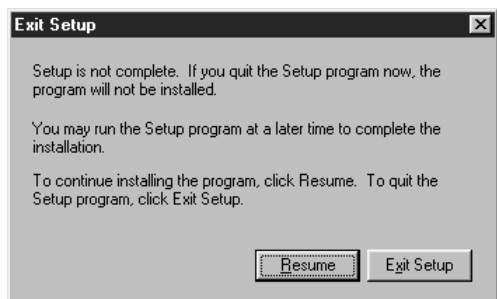
Selecting this item brings up the dialog box shown under **Cancel** in the Step 3, allowing you to exit the setup program without installing *Nikon Control* or the *Nikon Scan* TWAIN drivers. You can run the setup program again at any time to complete installation.

Step 6 — Complete installation

Clicking **Next** in the Choose Destination Location dialog box causes *Nikon Control* to be installed in the specified directory and the drivers for *Nikon Scan* to be copied to the **Mdmods32** and **Twain_32** directories within the Windows directory. The following progress indicators will be displayed while the program files and drivers are being written to your hard disk.

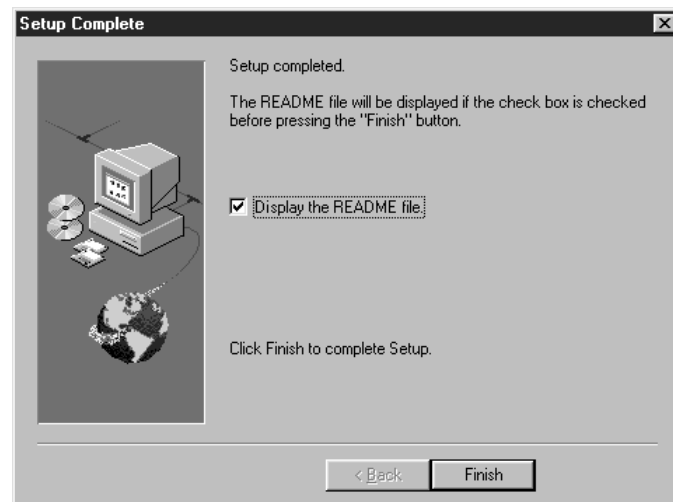


Clicking **Cancel** interrupts the installation and brings up the dialog box shown below.



Click **Resume** to continue the installation process from the point it was interrupted. Click **Exit Setup** to cancel the installation and return to Windows without adding *Nikon Control* and *Nikon Scan* to your system. You can begin the installation process again at any time by inserting the installer CD into the CD-ROM drive.

Once the installer has finished copying the files for *Nikon Control* and *Nikon Scan* to the destination directories, the following dialog will be displayed.



Check "Display the README file" to view the contents of the README file when installation ends (recommended).

Note: The README file may contain important information about Nikon Scan which could not be included in the manuals.

Click **Finish** to return to the Welcome window shown in Step 1. If "Display the README file" is checked, the README file will be opened in the *Notepad* accessory. When you have finished viewing the README file, choose **Exit** from the **File** menu to close the *Notepad* accessory. The README file can be viewed again at any time by opening the copy of the README file located in the directory you chose as the destination for *Nikon Control*.

Step 7 — Install additional software

When you exit the *Nikon Scan* installer, the Welcome window shown in Step 1 will be displayed. Click **Install Slides & Sound** to install the trial version of *Slides & Sound Plus*, or click **EXIT** to end the installation process and return to Windows. The installer can be started again at a later date by placing the CD-ROM in the drive.